

Please refer to the Package Insert for complete instructions.
Read the complete test procedure before performing the test.

Before Running The Test

- Before running the test, please ensure that you have read all the information in this package insert.
- The Ferritin Rapid Test Cassette (Whole Blood) is intended for professional in vitro diagnostic use only.
- Follow the specimen collection and preparation instructions carefully, and make sure all materials are at room temperature before testing.

Intended Use

- The Ferritin Rapid Test Cassette (Whole Blood) is a professional in vitro diagnostic test intended to qualitatively detect ferritin, a protein indicating iron stores, in human fingerstick blood.
- It is designed for screening and assessing iron deficiency anaemia by identifying individuals with low ferritin levels, which may indicate insufficient iron stores.

Warnings & Precautions

1. For laboratory, professional, and clinical in vitro diagnostic use only. Do not use after the expiration date.
2. Do not eat, drink, or smoke in the area where the specimens or kits are handled.
3. Do not use test if pouch is damaged or if it has already been used.
4. Handle all specimens as if they contain infectious agents. Observe established precautions against microbiological hazards throughout testing and follow standard procedures for proper disposal of specimens.
5. Wear protective clothing such as laboratory coats, disposable gloves, and eye protection when specimens are being tested.
6. The used test should be discarded according to local regulations.
7. Humidity and temperature can adversely affect results.
8. Follow the indicated times strictly.

STORAGE AND STABILITY

Store as packaged in the sealed pouch at room temperature or refrigerated (2-30°C). The test is stable through the expiration date printed on the sealed pouch. The test must remain in the sealed pouch until use. DO NOT FREEZE. Do not use it beyond the expiration date.

Please refer to the Package Insert for complete instructions.
Read the complete test procedure before performing the test.

Ferritin Rapid Test

Test Procedure

1. Prepare the Test Kit:

- Ensure the test kit is at room temperature (15–30°C) before opening. Remove the test cassette from the sealed pouch just prior to use.
- Place the cassette on a clean and flat surface.
- Clean the fingertip of your middle or ring finger, which will be used as the puncture site, using the provided alcohol pad.

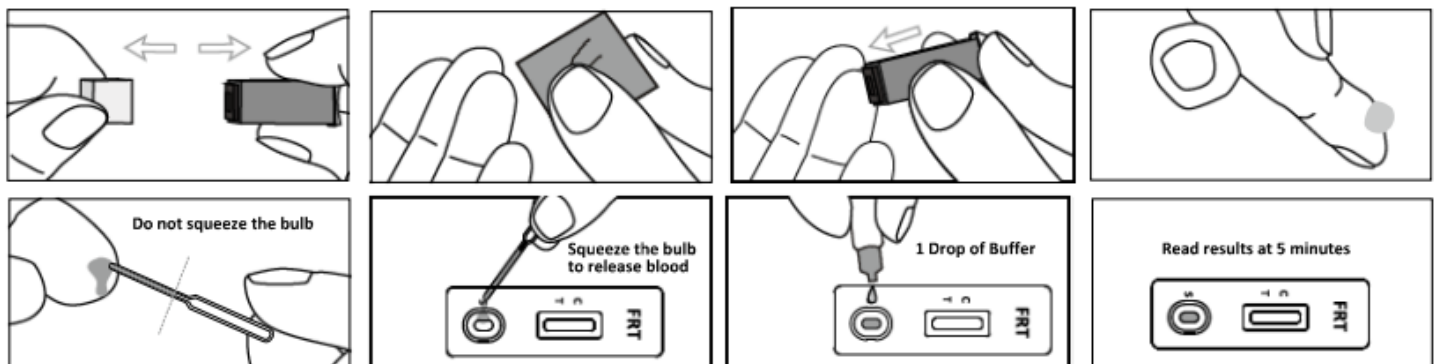
2. Specimen Collection and Preparation:

- Firmly press the lancet against the fingertip, specifically on the side where the cap was removed. The lancet will retract automatically and safely after use.
- With your hand positioned downwards, gently massage the finger that was pricked to obtain a blood drop.
- Without squeezing the capillary dropper bulb, bring it in contact with the edge of the blood drop. The blood should be drawn up into the dropper by capillary action. Ensure that the dropper is filled up to the black line. If needed, continue massaging the finger to obtain more blood while avoiding air bubbles.
- Squeeze the dropper bulb to transfer the collected blood into the sample well (S) of the cassette.
- Allow the blood to be fully dispensed into the well. Unscrew the cap of the buffer bottle and add one drop of buffer into the sample well.

3. Wait for Results:

- Allow the test to develop, and wait for coloured lines to appear in the result window. Interpret the results at the specified time (e.g., 5 minutes) mentioned in the instructions.

Do not read the results after the specified time, as it may lead to inaccurate interpretations.



Please refer to the Package Insert for complete instructions.
Read the complete test procedure before performing the test.

Ferritin Rapid Test

Positive Result:

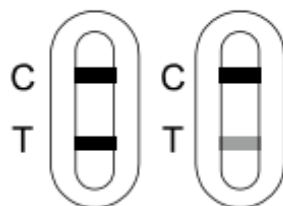
- A positive result for the Ferritin Rapid Test Cassette is indicated by the appearance of two lines on the test.
- **Both the T (Test) line and the C (Control) line will be visible.**
- This result signifies that the ferritin concentration in the blood is within the normal range, indicating the absence of iron deficiency.

Negative Result:

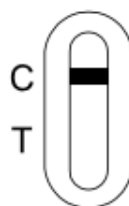
- A negative result is characterized by the presence of only one line, the C (Control) line.
- **If the T (Test) line does not appear, it indicates a low ferritin concentration in the blood.**
- This result suggests the possibility of iron deficiency, and further consultation with a healthcare professional is recommended.

Invalid Result:

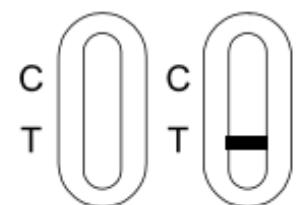
- An invalid result is indicated **when the control line fails to appear.**
- This can be due to insufficient specimen volume or incorrect procedural techniques.
- It is advised to review the procedure, repeat the test with a new kit, and ensure proper specimen volume.
- If the problem persists, discontinue using the test kit and contact us at (866) 287-2425 or info@spectrummdx.com



Normal



Abnormal



Invalid

Please refer to the Package Insert for complete instructions.
Read the complete test procedure before performing the
test.

Ferritin Rapid Test

Ferritin Rapid Test Training Quiz

What is the primary purpose of the Ferritin Rapid Test Cassette?

- a) To detect hemoglobin levels
- b) To detect ferritin levels
- c) To detect iron levels
- d) To detect vitamin C levels

When should the test be used?

- a) Anytime during the day
- b) In cases of suspected iron deficiency anaemia symptoms
- c) During acute inflammations
- d) In cases of liver injury

What should be done if the control line fails to appear in the test?

- a) Repeat the test with a new kit
- b) Wait for a longer duration
- c) Proceed with the interpretation of the result
- d) Contact the local distributor

How long should you wait for the coloured lines to appear?

- a) 2 minutes
- b) 5 minutes
- c) 10 minutes
- d) 15 minutes

What does a positive result indicate?

- a) Normal ferritin concentration
- b) Abnormal ferritin concentration
- c) Insufficient specimen volume
- d) Inaccurate procedural technique

What action is recommended if the result is abnormal?

- a) Repeat the test with a new kit
- b) Consult a healthcare professional and show the test result
- c) Wait for symptoms to resolve on their own
- d) Discontinue using the test kit